

FUJIPOLY[®]

Connector Hybrid (for ECM Microphone)

FUJIPOLY[®] and ZEBRA[®] are registered Trademarks of Fujipoly Group.

FUJIPOLY DATA SHEET NUMBER FPDS 01-35 / Version 2

Fuji Polymer Industries Co.,Ltd. (Overseas office)

JAPAN

3F Kanda YKBldg 3-9, Iwamoto-cho 1-chome, Chiyoda-ku Tokyo Japan, 101-0032

[Phone] +81-3-5821-3105 [Facsimile] +81-3-5821-3108

[e mail] fujipoly@mxd.mesh.ne.jp

ISO9002

Fujipoly America Corporation.

USA

900 Milik Street P.O. Box 119 Carteret, NJ 07008-0119

[Phone] +1-732-969-0100 [Facsimile] +1-732-969-3311

[e mail] info@fujipoly.com [web site] www.fujipoly.com

QS9000

Fujipoly Europe Ltd.

ENGLAND

Avant Business Centre, Unit 17, Third Avenue, Bletchley Milton Keynes, MK1 1DR England

[Phone] +44-1908-277800 [Facsimile] +44-1908-379916

[e mail] fujipoly@btconnect.com

Fujipoly Singapore PTE Ltd.

SINGAPORE

Blk 71 Ayer Rajah Crescent #04-03/06 Singapore 139951

[Phone] +65-773-3466 [Facsimile] +65-773-2234

[e mail] fujipoly@mbox5.singnet.com.sg

ISO9002

Fujipoly (Thailand) Co.,Ltd.

THAILAND

55/8 Moo 13 Navanakorn Industrial Estate Phase 4 Phaholyothin Road.

Klong Nueng, Klong Luang, Pathumthanee 12120, Thailand

[Phone] +66-2-529-2732 [Facsimile] +66-2-529-2223

[e mail] fujipoly@cscoms.com

ISO9002

Fujipoly-Apcom Ltd.

HONG KONG

Workshop (F&J), Block 1, 4/F, Kwai Tak Industrial Centre Kwai Tak Street, Kwai Chung, N.t., Hong Kong.

[Phone] +852-2428-3770 [Facsimile] +852-2489-9637

[e mail] fujipoly@netvigator.com

Fujipoly China Ltd., China Factory

CHINA

1/F., JiaLongDa Bldg., Changlang Road, Jinmei Estate, Changping, Dongguan, GuangDong China 523579

[Phone] +86-769-3989660 [Facsimile] +86-769-3989662

[e mail] chinafujipoly-00@sohu.com

FUJIPOLY[®] DATA SHEET FPDS 01- 35 (Version 2)

1] Product Name :

- FUJIPOLY[®] Connector Hybrid FMCA - TYPE 11
- FUJIPOLY[®] Connector Hybrid FMCA - TYPE 12
- FUJIPOLY[®] Connector Hybrid FMCA - TYPE 13

2] Features :

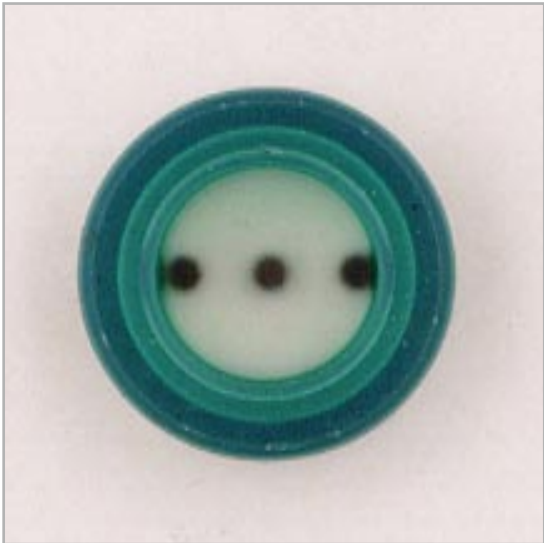
- 1) Labor Saving / Ease of Assembly.
An ECM (Electret Condenser Microphone) can be easily assemble to PCB as elastic Connector and anti-vibration rubber bush are constructed in one piece.

- 2) Solderless Connections.
There is no need of soldering an ECM to PCB and this reduce a risk of damage the PCB by heat of soldering.

3] Variety of FujiPoly Connector Hybrid.

| Series | Applications / Adaptability |
|---------------|--|
| FMCA TYPE 11 | Solderless Type ECM for Ø6.0 - 1.3mm Thickness |
| FMCA TYPE 12 | Solderless Type ECM for Ø6.0 - 1.5mm Thickness |
| FMCA TYPE 13 | Solderless Type ECM for Ø6.0 - 2.2mm Thickness |

4] Connector Hybrid FMCA-TYPE 11



FMCA-TYPE 11

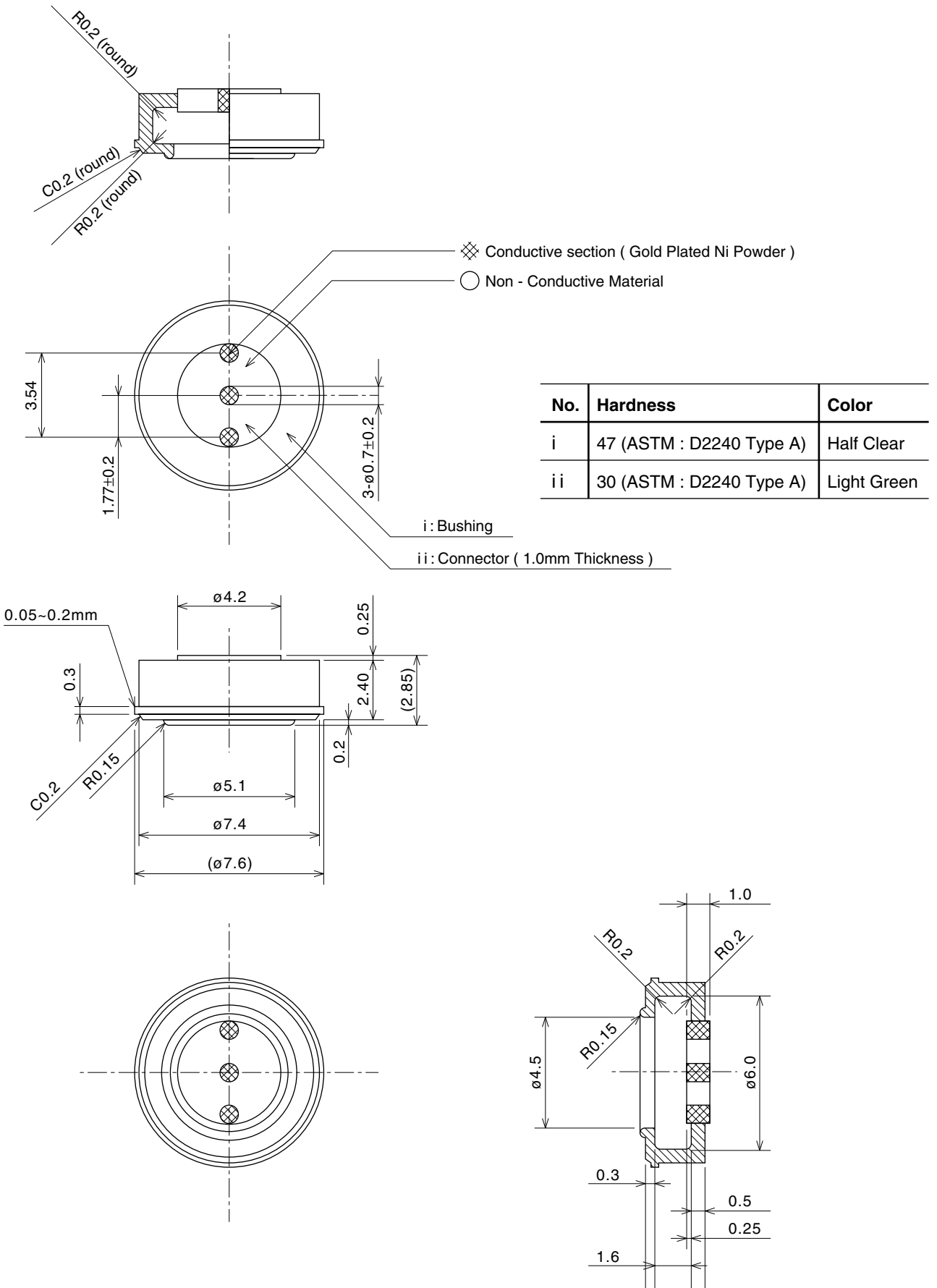


FMCA-TYPE 11

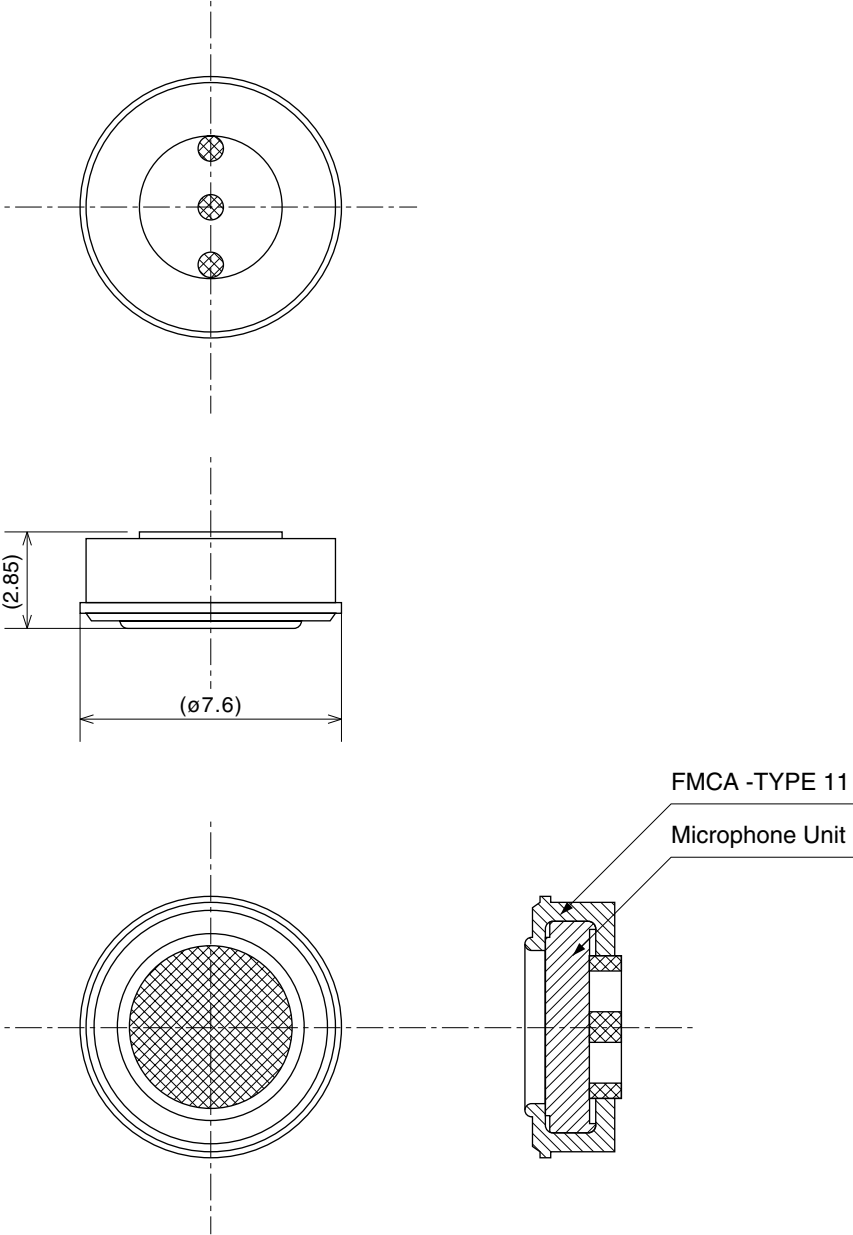


FMCA-TYPE 11

4] -1) Plan of FMCA - TYPE 11

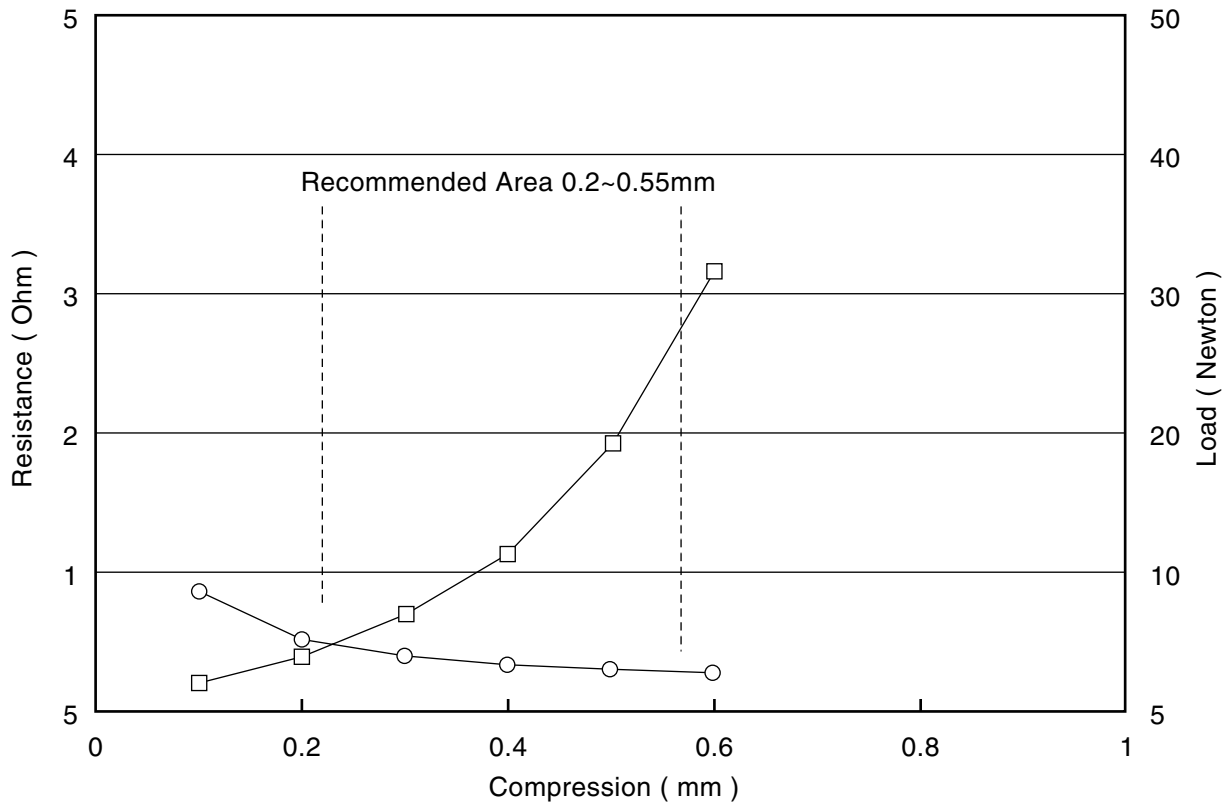


4] -2) Illustration design of FMCA - TYPE 11



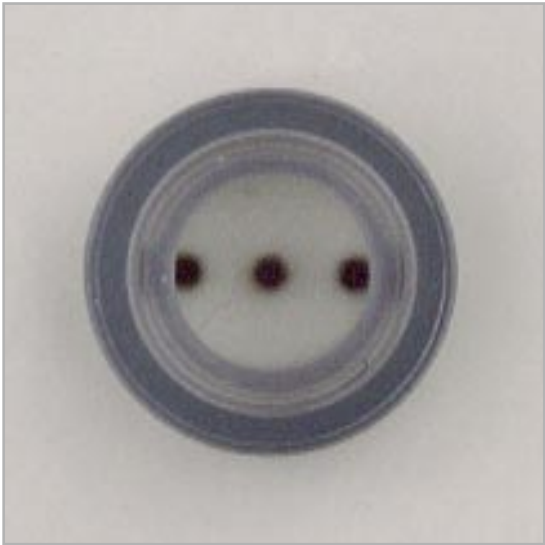
4] -3) Technical Data for FMCA-TYPE 11

Compression Vs Load / Compression Vs Resistance.

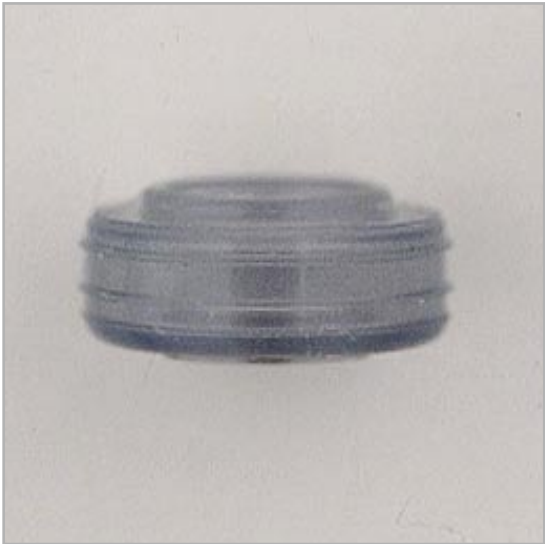


Note:
 Sample: FMCA - TYPE11
 Microphon : Dummy
 PCB : Circle Type
 Compression Speed : 1mm / minute

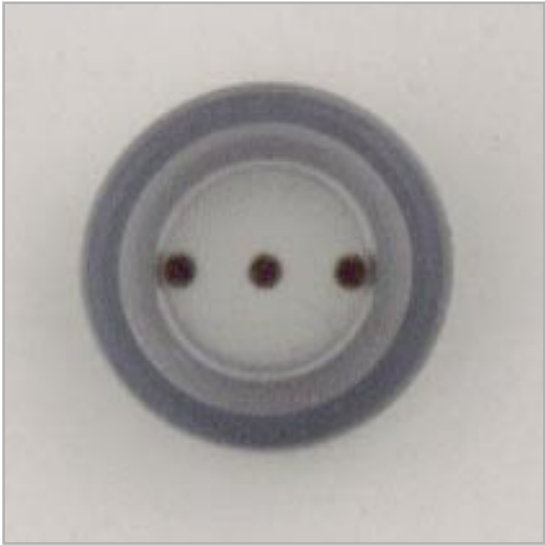
5] Connector Hybrid FMCA-TYPE 12



FMCA-TYPE 12

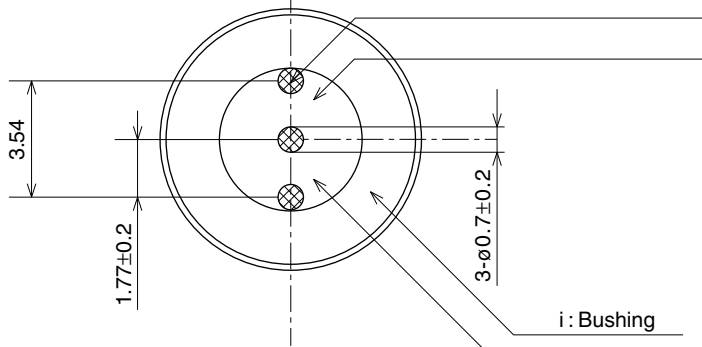
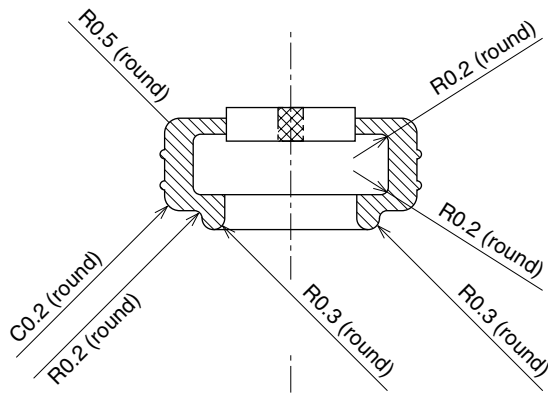


FMCA-TYPE 12



FMCA-TYPE 12

5] -1) Plan of FMCA - TYPE 12

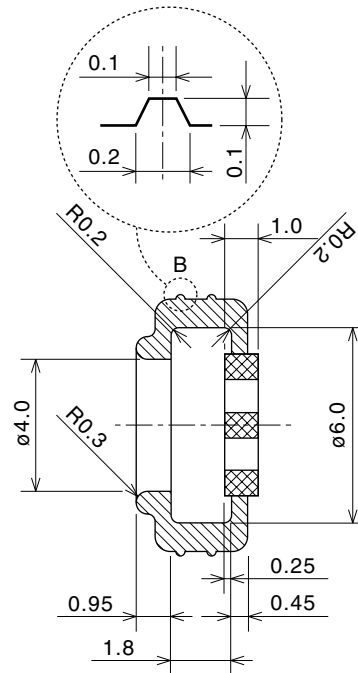
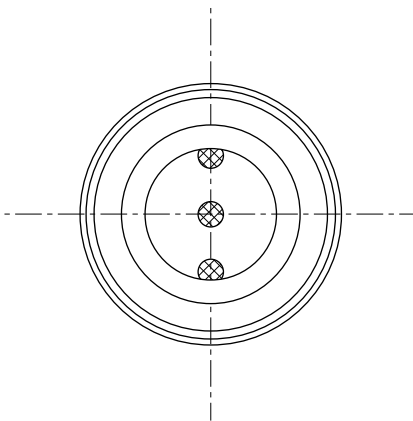
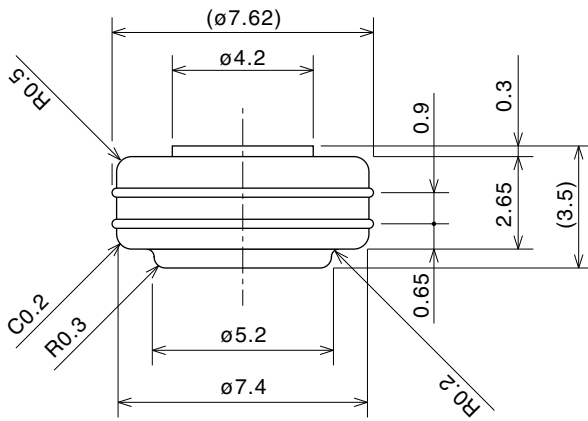


Conductive section (Gold Plated Ni Powder)
 Non - Conductive Material

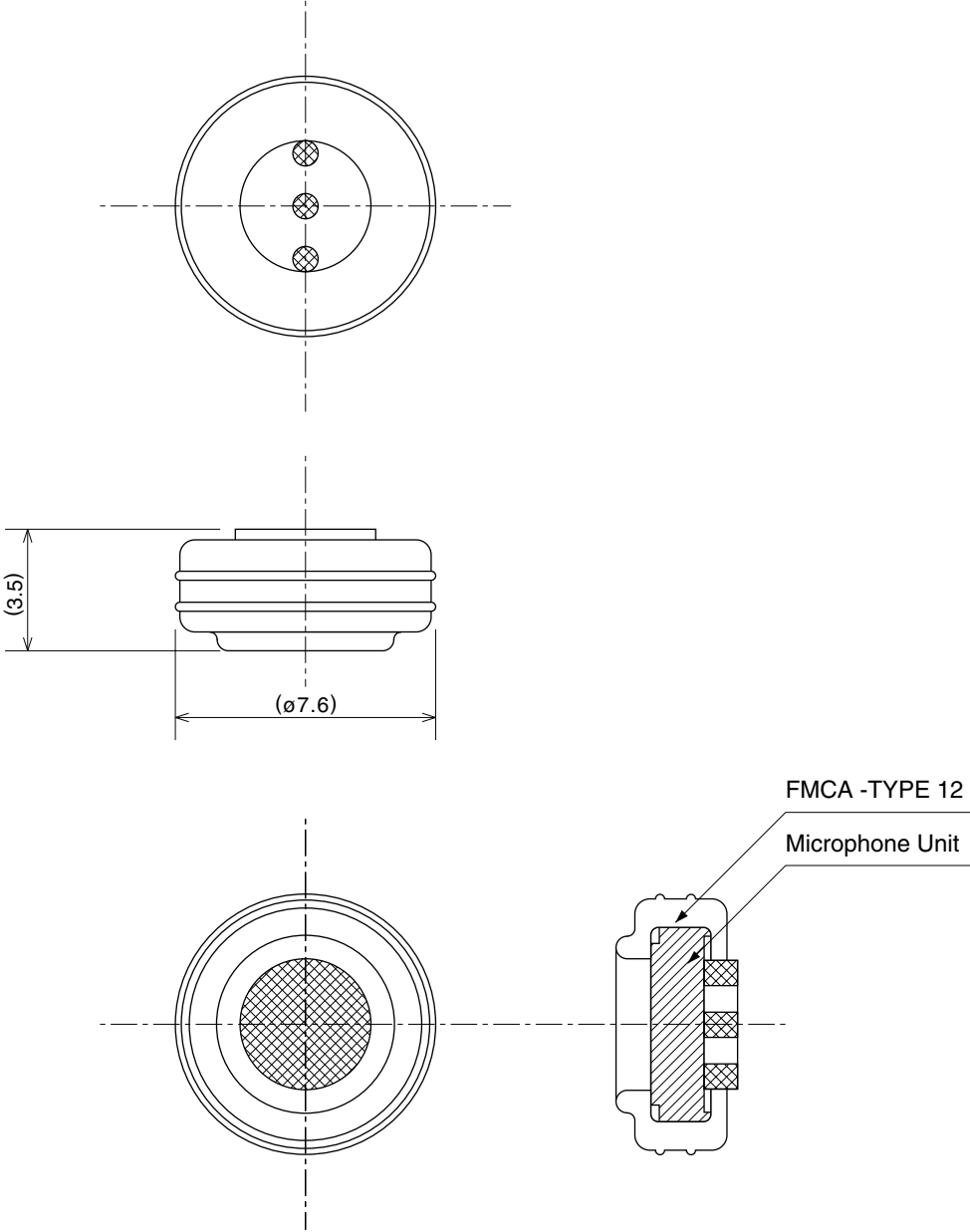
| No. | Hardness | Color |
|-----|--------------------------|------------|
| i | 47 (ASTM : D2240 Type A) | Half Clear |
| ii | 30 (ASTM : D2240 Type A) | Light Gray |

i : Bushing

ii : Connector (1.0mm Thickness)

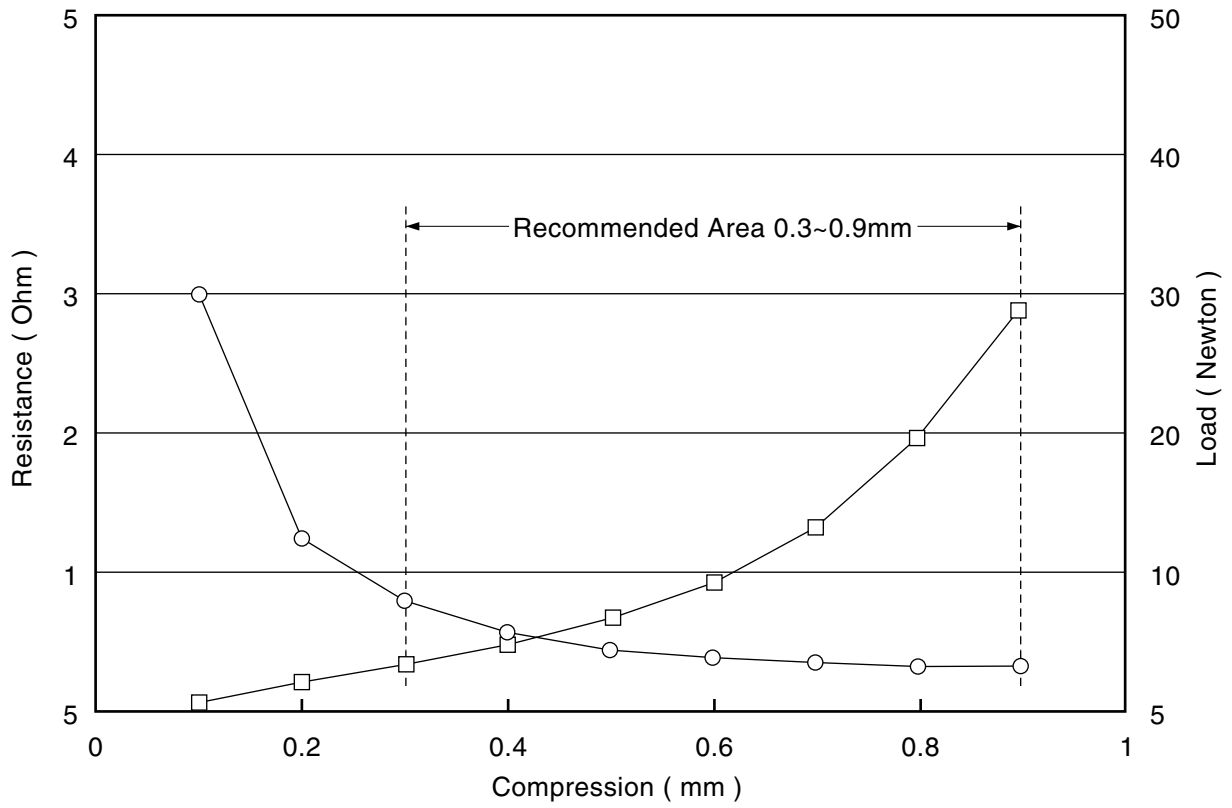


5] -2) Illustration design of FMCA - TYPE 12



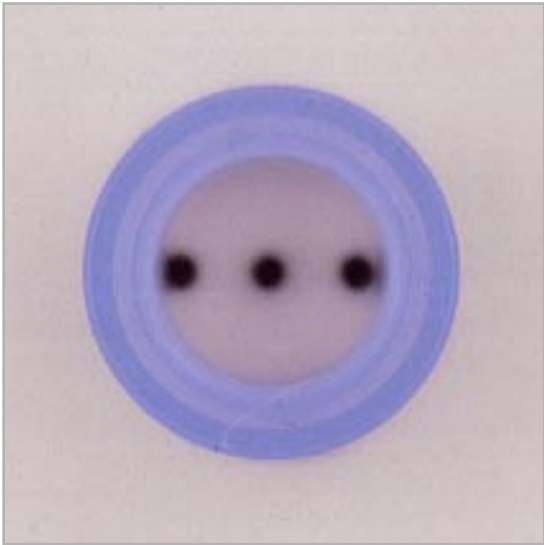
5] -3) Technical Data for FMCA-TYPE 12

Compression Vs Load / Compression Vs Resistance.



Note:
 Sample: FMCA - TYPE12
 Microphon : Dummy
 PCB : Circle Type
 Compression Speed : 1mm / minute

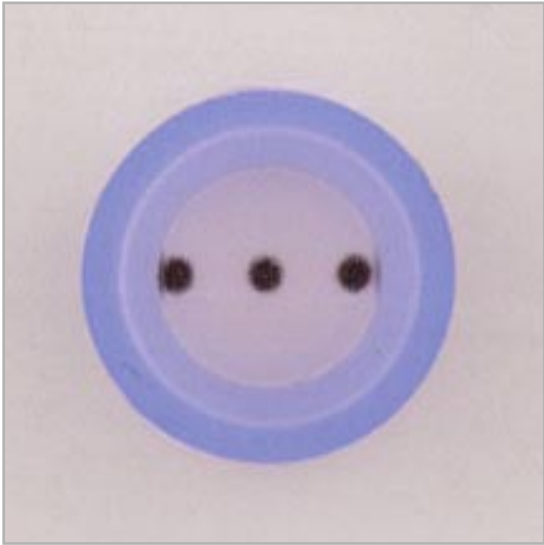
6] Connector Hybrid FMCA - TYPE 13



FMCA-TYPE 13

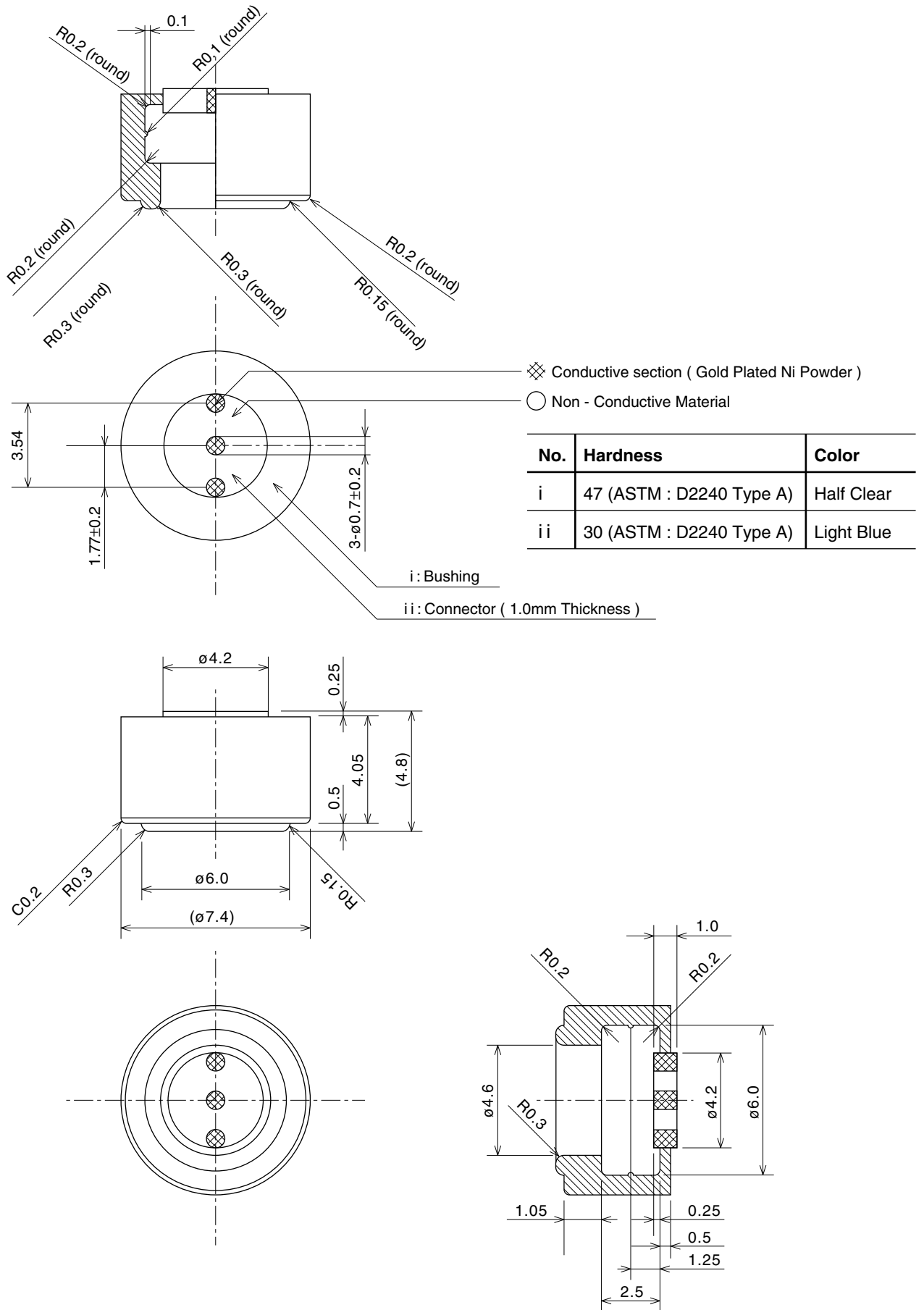


FMCA-TYPE 13

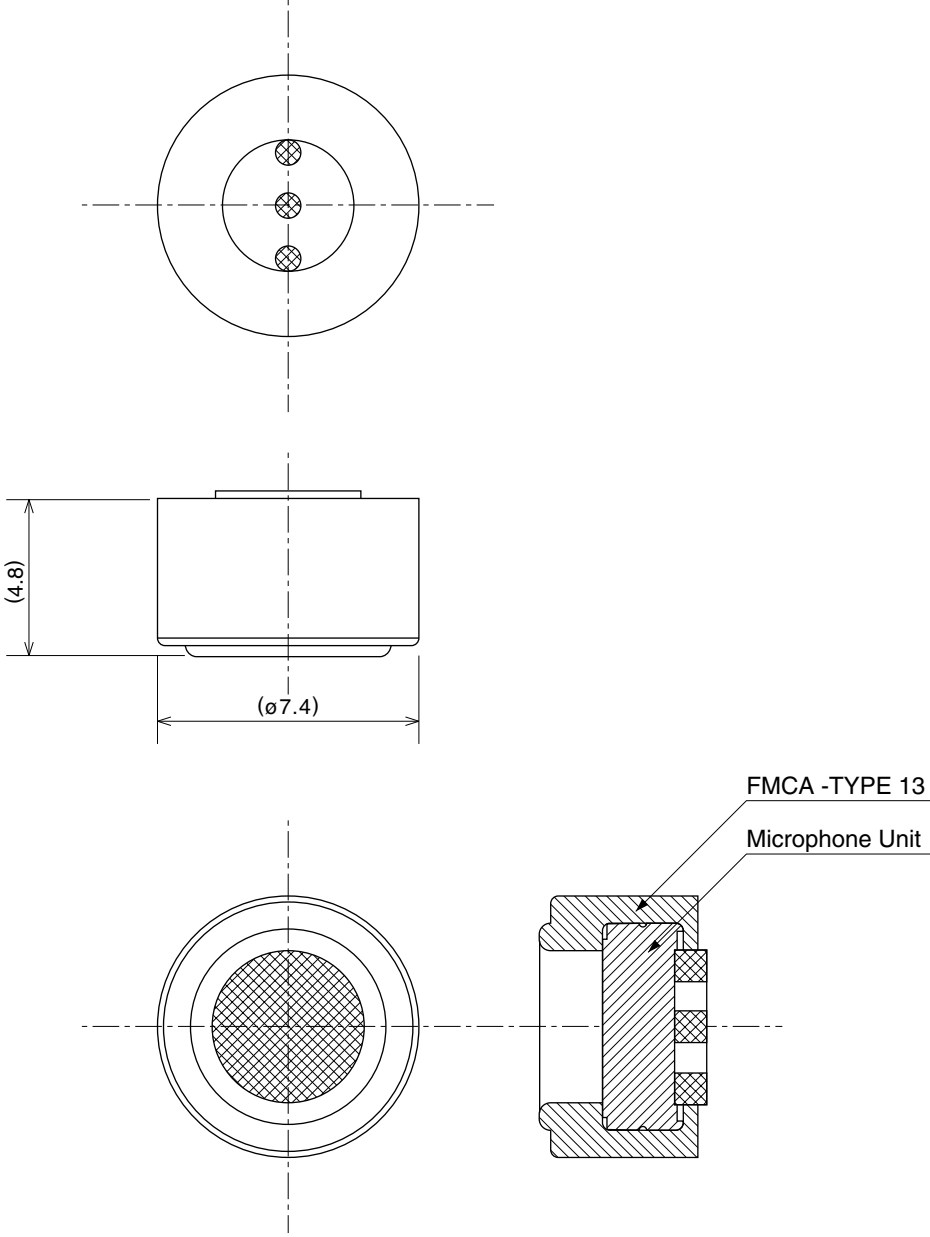


FMCA-TYPE 13

6] -1) Plan of FMCA TYPE 13

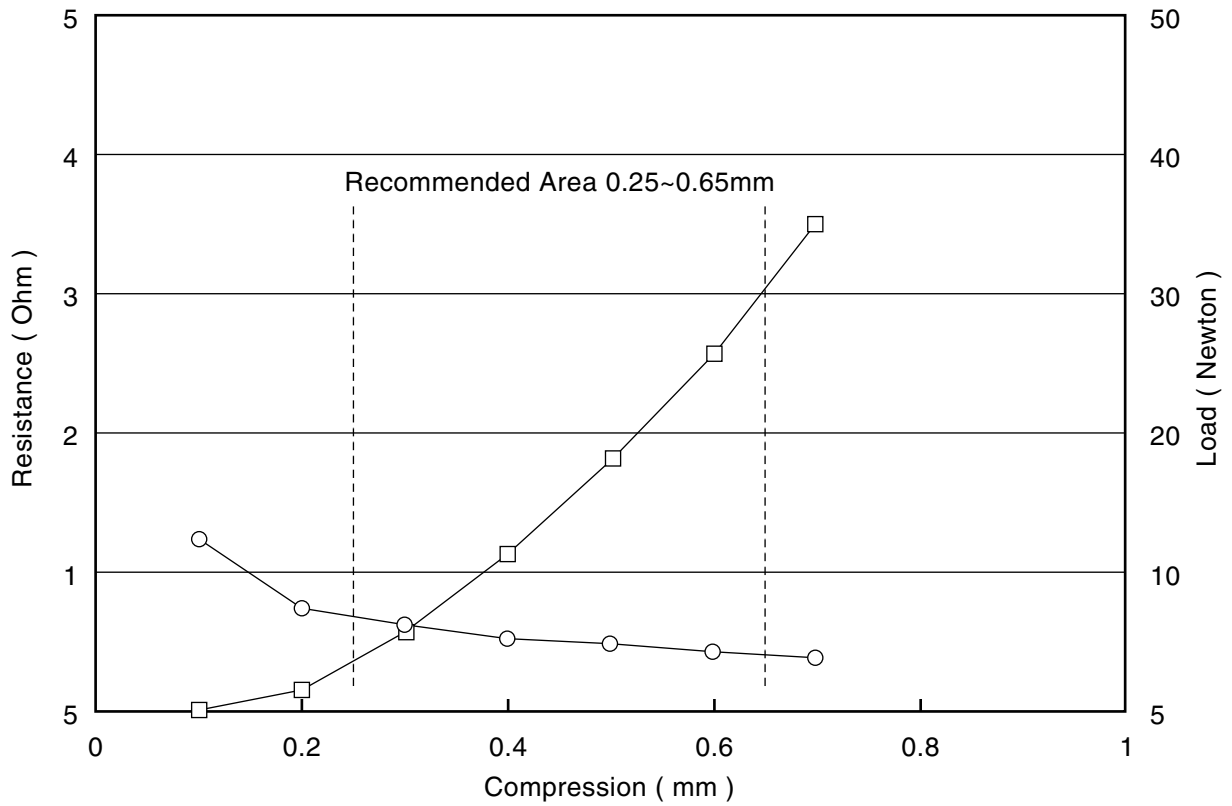


6] -2) Illustration design of FMCA - TYPE 13



6] -3) Technical Data for FMCA-TYPE 13

Compression Vs Load / Compression Vs Resistance.



Note:
Sample: FMCA - TYPE13
Microphon : Dummy
PCB : Circle Type
Compression Speed : 1mm / minute

7] Others Technical Informations.

Fuji Poly website <http://www.fujipoly.com>

: January.31th 2002 version 2
ISSUED : March.15th 2001 version 1

STATEMENT OF LIEU OF WARRANTY: All technical information and data in this document is based on tests and is believed to be accurate and reliable. Nevertheless, since the products described herein are not provided to conform with mutually accepted specifications and the use thereof is unknown, the manufacturer and seller of the product do not guarantee results, freedom from patent infringement, or suitability of the product for any application thereof. The manufacturer and seller of the product, described in this document will provide all possible technical assistance and will replace any products proven defective. No statement or recommendation made by the manufacturer or seller, not contained herein, shall have any force of effect unless in conformity with an agreement signed by an officer of the seller or manufacturer. Product testing by the purchaser is recommended in order to confirm expected results.

Copyright ' 1996 Fujipoly.

*FUJIPOLY® is registered Trademark of Fujipoly Group.